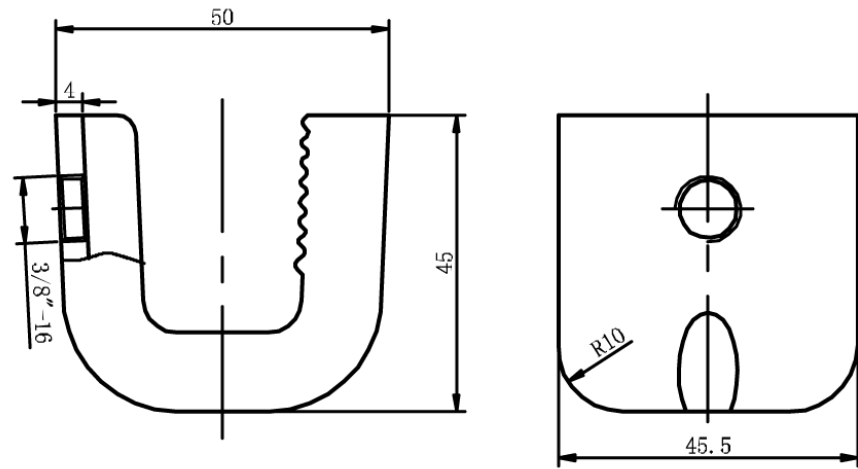


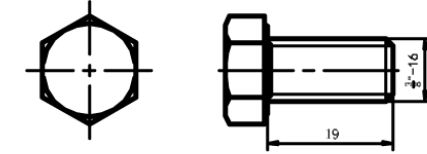
232010110 Grounding Bus Bar Kit



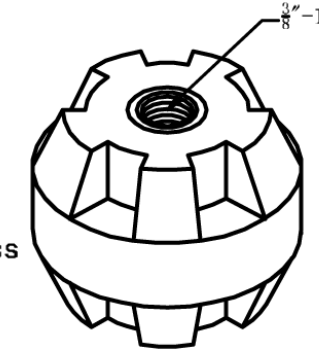
1. C Bracket (3/8") Material:Q235 Qty.:2pcs HDG



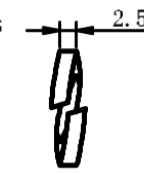
3. Square-head bolt (3/8"*1-3/4") Material:SUS304 Qty.:2pcs



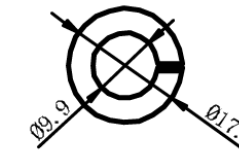
4. Hex-head bolt (3/8"*3/4") Material:SUS304 Qty.:6pcs



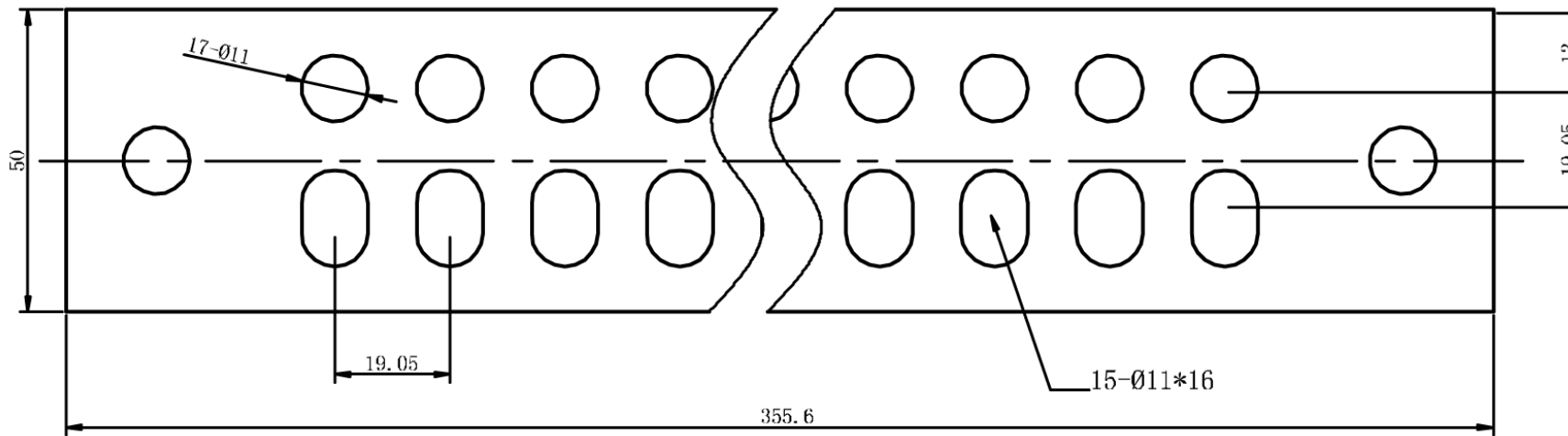
5. Insulator (3/8") Material:DMC Qty.:2pcs



6. Spring washer (3/8") Material:SUS304 Qty.:4pcs



7. Nut (3/8") Material:SUS304 Qty.:2pcs



2. Buss-bar Material:T2 Thickness=6mm Qty.:1pce Tin-plated

Item	Description	Size	Material	QTY	Unit
7	Nut	3/8"	SUS304	2	pcs
6	Spring Washer	3/8"	SUS304	4	pcs
5	Insulator	3/8" - 16	DMC	2	pcs
4	Hexagon-head bolt	3/8"*3/4"	SUS304	6	pcs
3	Square-head bolt	3/8"*1-3/4"	SUS304	2	pcs
2	Bus Bar	6*50*355.6	T2	1	pcs
1	C-Frame	45*47*50*52.5	Q235	2	pcs