

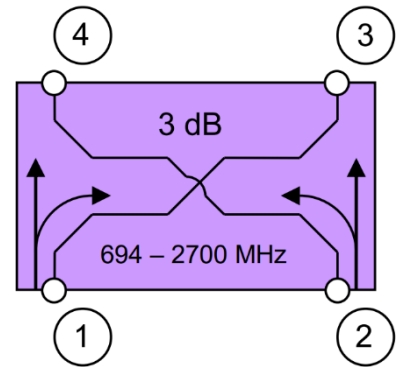
DATASHEET

4G 2:2 Port Hybrid Combiner N Socket

SKU: 17831S

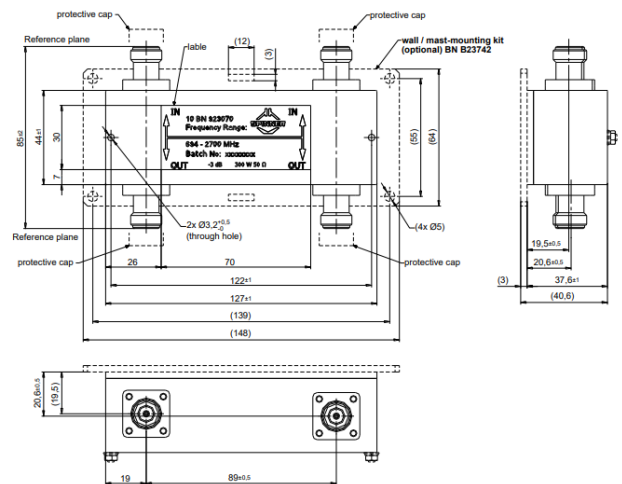


Block Diagram



SPECIFICATIONS

Connectors	N Socket
V Frequency Range	694 – 2700 MHz
Insertion Loss	≤ 3.6 dB
Isolation	≥ 25 dB
VSWR	≤ 1.25
Power Rating	300 W per port
IM – Value 3 rd Order at 2 x 20 W	≤ -155 dBc typical ≤ -160 dBc
Degree of Protection	IP 65 (Outdoor)
Environmental Conditions	ETSI EN 300019-1-1 Class 1.2 ETSI EN 300019-1-2 Class 2.3 ETSI EN 300019-1-4 Class 4.1E
Weight	0.8 kg
Dimensions (W x H x D)	91.2 mm x 127 mm x 37.6 mm
Wall / Mast Mounting	To be ordered separately
Temperature Range	-40 to +80 °C



Website: benelec.au