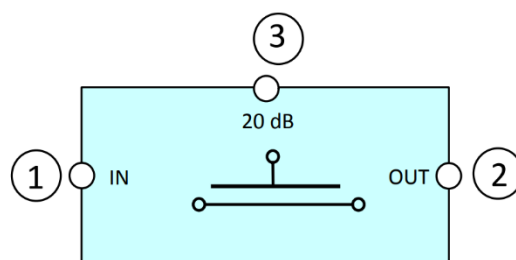
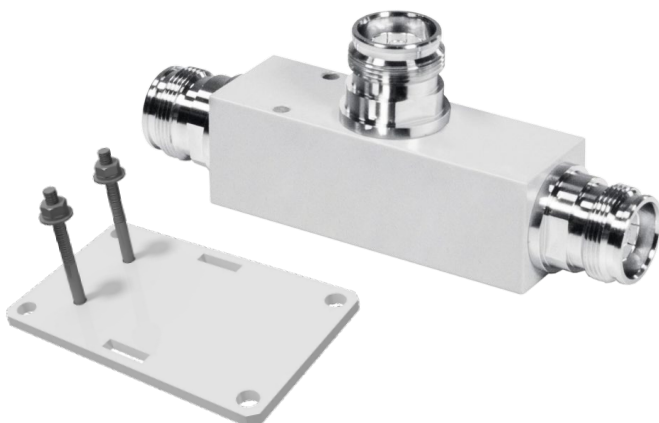


DATASHEET

5G DIRECTIONAL COUPLER / TAPPER 4.3-10s

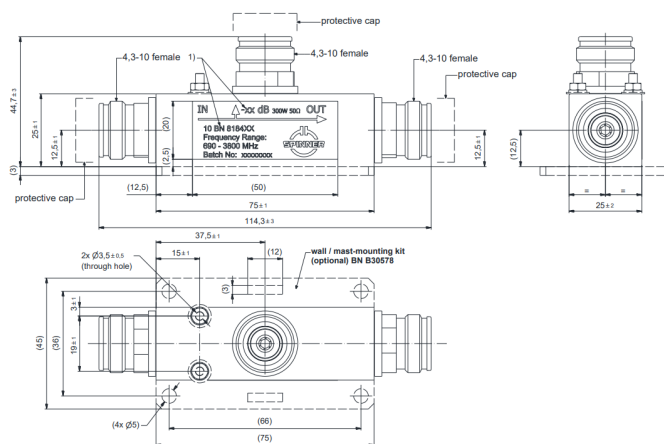
6.1 dB, -153 dBc, Spinner BN818450 w/ BRACKET B30578



Block Diagram

ELECTRICAL SPECIFICATIONS

Splitting Ratio	1 : 0.25 : 0.75
Frequency Range	690 – 2170 MHz 2300 – 3800 MHz
Insertion Loss	≤ 1.7 dB
Coupling	6 dB - 1.4/1.6
VSWR	≤ 1.3
Impedance	50 Ω
Power Rating	Average Power 300 W (CW)
Intermodulation Products in RX Band with 2 x 42 dBm (20W)	≤ -153 dBc



MECHANICAL SPECIFICATIONS

Connectors	4.3-10 Female
Dimensions (approx.) (W x H x D) (Without Mounting Kit)	25 mm x 45 mm x 115 mm
Weight (approx.)	0.22 kg
Colour	Gray
Wall / Mast Mounting	Included

ENVIRONMENTAL SPECIFICATIONS

Class of Environmental Conditions	ETSI EN 300019-1-1 Class 1.2 ETSI EN 300019-1-2 Class 2.3 ETSI EN 300019-1-4 Class 4.1E
Degree of Protection	IP 65 (Outdoor)
Operation Ambient Temperature Range	-30 °C to +75 °C
Storage Ambient Temperature Range	-40 °C to +80 °C
Relative Humidity, max.	95 % (non-condensing)