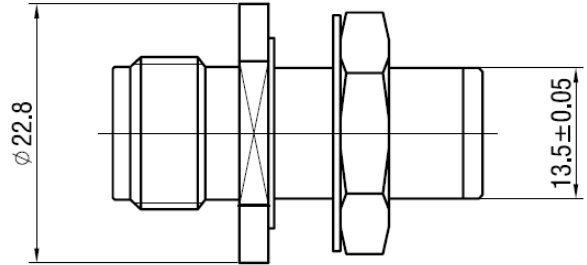


DATASHEET

PART NO: **04237**

N Socket to N Socket Panel Mounted Adaptor



04237 is an N Socket to N Socket Panel Mounted Adaptor. This connector has a nickel-plated body, nut, and washer. Teflon insulator is provided for protection.

FEATURES

- Gold Plated Contact Socket
- With Teflon Insulator
- Nickel Plated Body, Nut, Washer
- 50 Ohm
- Reliable, Robust & Durable

MATERIALS & PLATING

| | Description | Material | Surface Plating |
|---|----------------|----------|-----------------|
| 1 | Body | Brass | Nickel |
| 2 | Contact Socket | Bronze | Gold |
| 3 | Insulator | Teflon | N/A |
| 4 | Nut | Brass | Nickel |
| 5 | Washer | Brass | Nickel |

PACKAGING

Each: Net Weight - 44g
Poly Bag: 50 pcs - G.W. 2.2kg
Box: 500 Pcs - G.W. 22kg

WARRANTY

12 months (Please refer to [Benelec Terms & Conditions](#))