

## Part No **041014** **UHF clamp plug for RG213 & LL400**

The **041014 UHF PL-259 plug** is a combination solder & clamp solder style. It is a quality Nickel plated product with Gold finish on the centre pin contact & also the soldering surface (inside of centre pin). Unlike silver plated connectors it has high resistance to tarnishing.

The construction features Brass metal parts with Nickel or Gold plated surfaces as appropriate. The shield screw thread connection conforms to the proper UHF PL-259 standard imperial thread (unlike some competitor 'metricized' parts).

### Applications

For use with 10mm coaxial cables including:

<b>05605</b>	<b>RG-213/U 50Ω (100m roll)</b>
<b>056055</b>	<b>RG-213/U 50Ω (500m roll)</b>
<b>056041</b>	<b>LL400 50Ω (100m roll)</b>
<b>05613</b>	<b>RG-11A/U 75Ω (100m roll)</b>

...and similar.

**041014 UHF PL-259 clamp plug**



### Features

- ✓ Nickel plated Brass metal parts
- ✓ Gold Plated Brass centre pin
- ✓ Teflon Dielectric
- ✓ Silicon gasket
- ✓ RoHS compliant
- ✓ Reliable, Robust, Durable
- ✓ Suitable up to 520MHz
- ✓ Threads conform to imperial standards for PL-259

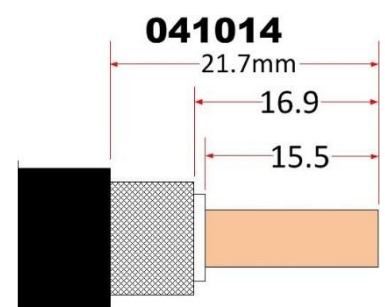
### Packaging

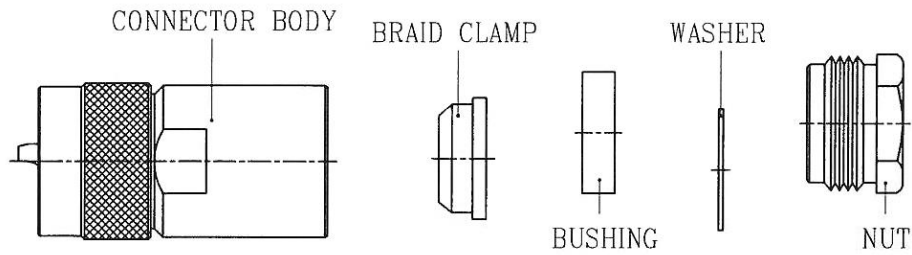
Each: N.W. 16.85g ; PolyBag 25x: G.W. 422g ;  
Box 100x: G.W. 1.745kg ;

### Warranty

12 months (Please refer to [Benelec Terms & Conditions](#))

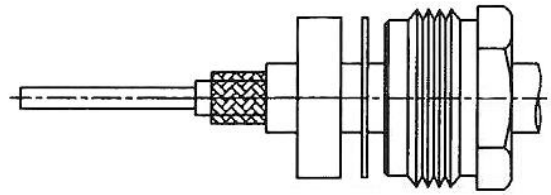
### Cable Preparation





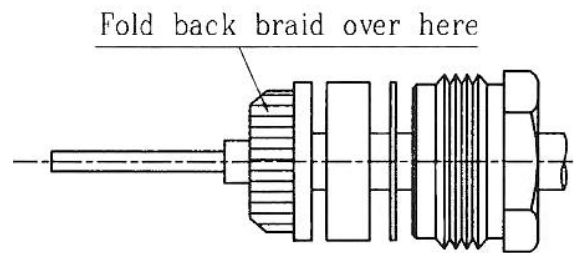
### 1. Preparation

- Slide crimp ferrule onto cable and strip cable according to Cable Preparation Dimensions.



### 2. Install Braid Clamp

- Place braid clamp over cable braid.
- Comb braid wires straight & fold back over front shoulder of braid clamp
- Trim braid flush with edge braid clamp.



### 3. Solder centre pin to cable centre conductor

- Insert cable centre conductor into centre contact until it butts against cable dielectric.
- Solder centre contact to cable centre conductor.

