

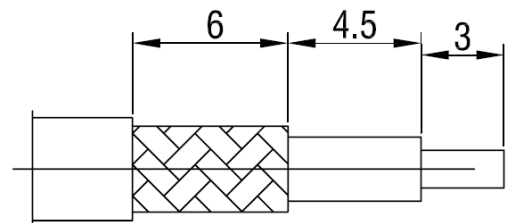
## DATASHEET

### SMA Plug for RG174 / RG316 Coax

PART NO: **040012**



Cable Stripping Dimensions (mm)



The 040012 SMA plug is a Sub-Miniature crimp-style coaxial connector. This connector is a quality brass connector with a gold-plated finish and centre pin. It uses PTFE dielectric.

#### FEATURES

- Gold Plated Centre & Outer Pin
- With Teflon Insulator
- 50 Ohm
- Reliable, Robust & Durable

#### APPLICABLE CABLES

RG174 and RG316 coaxial cable.

#### CRIMP HEX

3.25 mm

#### MATERIALS & PLATING

	Description	Material	Surface Plating
1	Contact Pin	Brass	Gold
2	Shell/ Body	Brass	Gold
3	Insulator	Teflon	N/A
4	Crimp Ferrule	Brass	Gold

#### PACKAGING

Each: Net Weight - 4g  
Poly Bag: 50 pcs - G.W. 0.20 kg  
Box: 500 Pcs - G.W. 2kg

#### WARRANTY

12 months (Please refer to [Benelec Terms & Conditions](#))