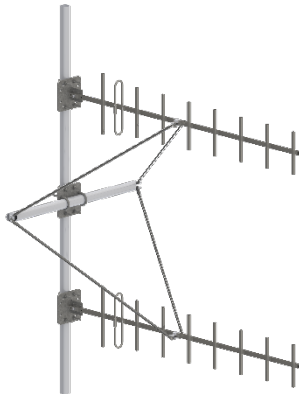
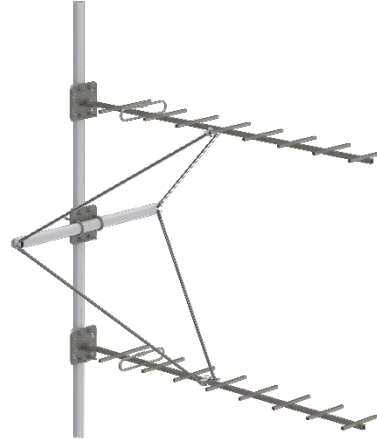


DATASHEET

Benelec Single Yagi Support Kit For Extreme Conditions



Vertical Polarisation Configuration
(Yagi Antenna not included)



Horizontal Polarisation Configuration
(Yagi Antenna not included)

Benelec's 028362 Dual Yagi Support Kit is designed to support Benelec's 02683X UHF 9-Element Yagi's and 02684X UHF 15-Element Yagi's. This Yagi Kit is designed to brace antenna(s) against extreme events such as in high wind and rainy areas. It is designed to have no effect on radiation patterns and can be used with Horizontal & Vertically mounted Yagi arrays.

APPLICATIONS

Added support to Benelec's 02683 series 9-Element UHF Yagi, and 02684 series 15-Element UHF Yagi Antennas.

FEATURES

Can be mounted for Vertical or Horizontal polarisation.

MOUNTINGS

The 028361 support comes with its own pole mounting attachment & attachment to Yagi.

PACKAGING

Cardboard box, 1 unit per box.
Dimensions: 1500 mm x 230 mm x 230 mm,
G.W.: 11 kg

WARRANTY

12 Months (Please refer to Benelec Standard Warranty Terms and Conditions)

Website: benelec.au