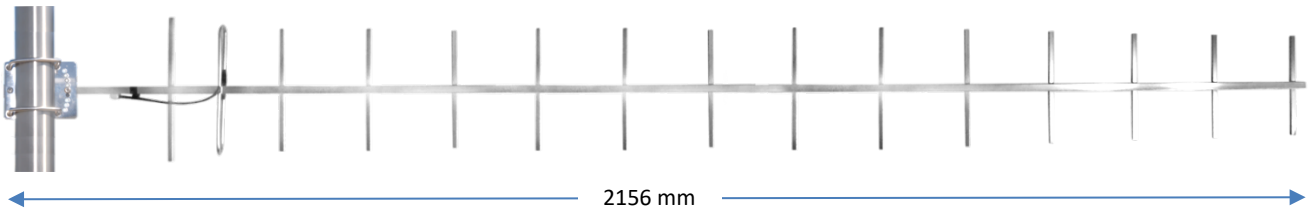


## DATASHEET

### UHF 15 ELEMENT YAGI ANTENNA

450 – 470 MHz



The model 02684V antenna is a 12 dBd (14 dBi) gain 15 element all Stainless-Steel directional Yagi antenna for use in the 450 – 470 MHz radio band. Its robust construction ensures excellent longevity and performance. The all Stainless-Steel construction is ideally suited for weather and corrosion resistance. All mechanical connections are welded for minimum inter-modulation levels. The antenna comes with its own mounting clamp. All electrical connections are directly soldered.

#### APPLICATIONS

Radio Links

#### TUNING

Factory tuned, no further tuning required.

#### FEATURES

- High Gain
- Stainless Steel construction
- Power splitter included
- Narrow beamwidth
- DC Grounding
- Adjustable mount  $\pm 20^\circ$  to the horizontal

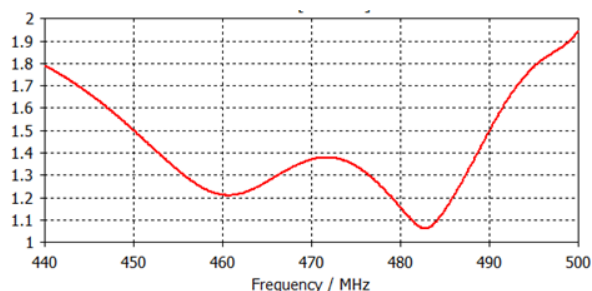
#### MOUNTING

02809 Heavy Duty Stainless Steel Tilted Angled mounting Bracket (included)

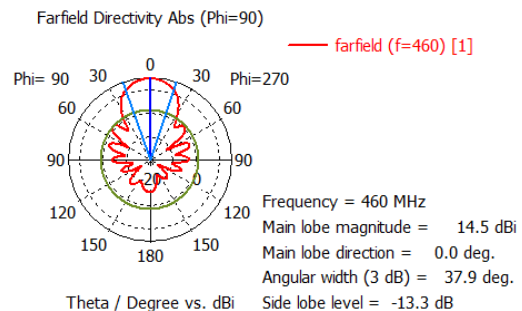
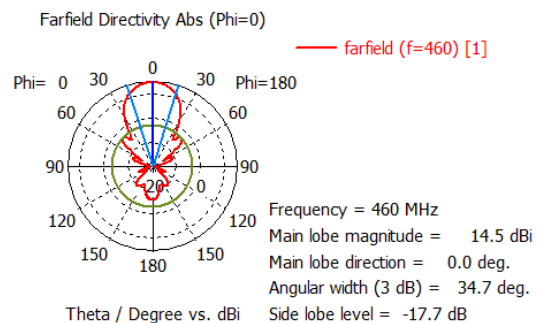
#### WARRANTY

3 years (Please refer to Benelec Standard Warranty Terms and Conditions)

#### VSWR



#### RADIATION PATTERNS



#### SPECIFICATIONS

Frequency	450 – 470 MHz
Gain	12 dBd, 14.15 dBi (mid band)
VSWR	<1.5:1 across entire band
Impedance	50 $\Omega$ Nominal
Polarisation	Directional
F/B Ratio	-20 dB (mid band)
Termination	N type female connector
Base Materials	All Stainless Steel
Antenna Length	2156 mm
Antenna Width	332 mm – widest element
Power Rating	100 watts
Wind Loading @ 160 KPH	20.87 KG / 204.6 N
E Plane 3 dB Beamwidth	35.5 deg
H Plane 3 dB Beamwidth	40 deg
Projected Area	0.0189 SQM
Weight	2.5 Kg