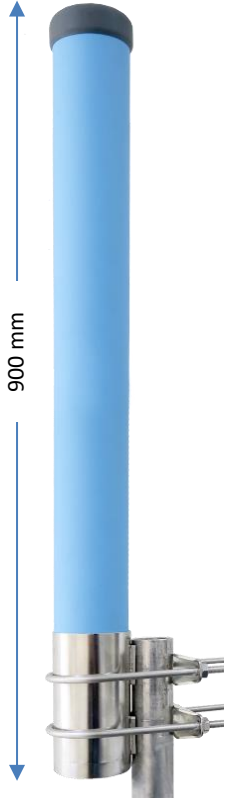


## DATASHEET

### VHF VERTICAL BROADBAND OMNI-DIRECTIONAL ANTENNA

200 – 240 MHz, 2.5 dBd



The model 02544C is a vertical base station antenna covering the band 200 – 240MHz. This antenna offers a stable radiation pattern across the entire band. The antenna is enclosed in a heavy-duty fiberglass radome and has a fixed N type female connector.

#### APPLICATIONS

Base station applications.

#### TUNING

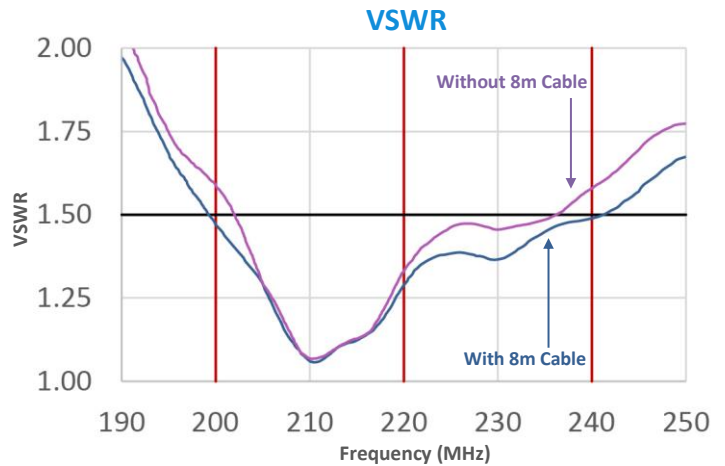
Factory tuned; no further tuning required.

#### FEATURES

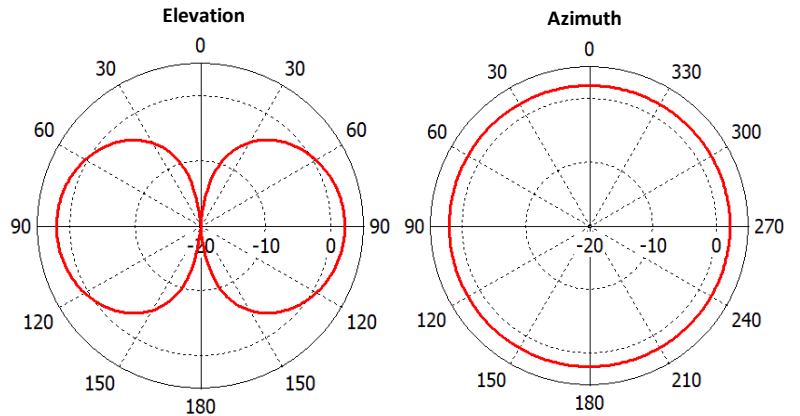
- All stainless-steel mounting base.
- Fully enclosed in a heavy-duty radome.
- Fixed N Connector.

#### MOUNTINGS

- 90 mm mounting tube.
- Supplied with heavy-duty stainless-steel brackets.



#### RADIATION PATTERNS



#### PACKAGING

1 pc antenna with brackets per Cardboard Box: 950 mm x 120 mm x 130 mm, Approx. Weight 4.5 kg.

#### SPECIFICATIONS

Frequency (Tested with 8m cable)	200 – 240MHz; VSWR<1.5:1	Gain	2.5 dBd
Frequency (Tested without 8m cable)	203 – 232MHz; VSWR<1.5:1	Impedance	50 Ω nominal
E Plane 3 dB Beamwidth	80 °	Polarisation	Vertical
H Plane 3 dB Beamwidth	360 °	Termination	N female fixed
Base Materials	Stainless-Steel & Fibreglass	Power Rating	500 Watts
Mounting Tube	90 mm diameter / 160 mm length	Antenna Length	900 mm
Support Tube	40 mm – 90 mm diameter	Antenna Weight	3.5 kg

Wind Loading	@ 160 KPH @ (175 MPH) 281 KPH with 0.5" Radial Ice @ (150 MPH) 241.4 KPH with 0.5" Radial Ice	12.04 kg/118 N 51.05 kg/500 N 38.13 kg/374 N
--------------	---	--

#### WARRANTY

3 years (Please refer to [Benelec Terms & Conditions](#))