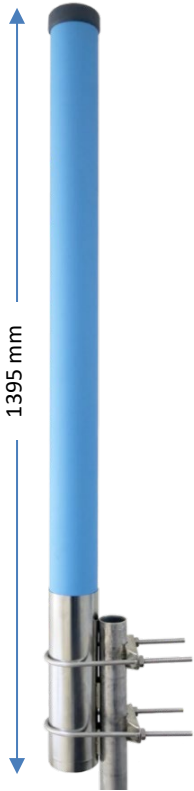


DATASHEET

SKU: 02544A

Benelec VHF High Band Base Broadband Dipole Antenna

144-174MHz



The model 02544A is a vertical base station antenna covering the band 144 – 174 MHz. This antenna offers a stable radiation pattern across the entire band. The antenna is enclosed in a heavy-duty fiberglass radome and has a fixed N type female connector.

APPLICATIONS

Base Station applications.

TUNING

Factory tuned; no further tuning required.

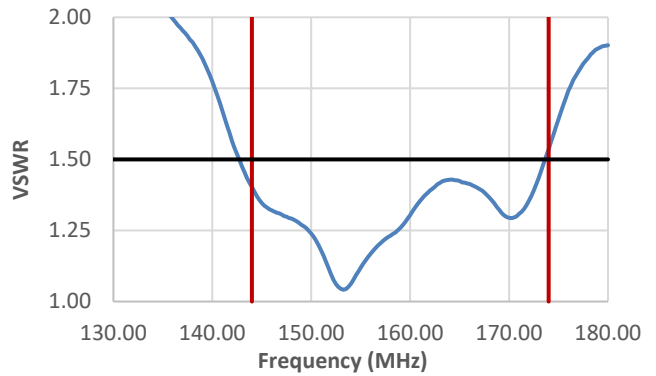
FEATURES

- All stainless steel.
- Fully enclosed in a heavy-duty radome.
- Fixed N connector.

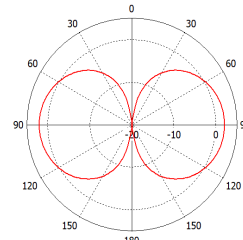
MOUNTINGS

Please refer to our website for all Mountings.

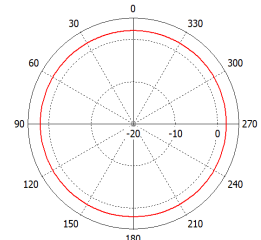
VSWR



RADIATION PATTERNS



Elevation



Azimuth

SPECIFICATIONS

Frequency	144 – 174 MHz				
Gain	2.5 dBd average				
VSWR	< 1.5:1 across entire band				
Impedance	50 Ω				
Polarisation	Vertical				
Termination	N Female Fixed				
Antenna Length	1395 mm				
Antenna Width	96 mm				
Power Rating	500 Watts				
Wind loading	@ 100 MPH	Without radial ice	82 N/8.36 kgf	With 0.5" radial ice	117 N/11.93 kgf
	@ 150 MPH		183 N/18.66 kgf		268 N/27.32 kgf
	@ 200 MPH		307 N/31.3 kgf		409 N/41.7 kgf
E Plane 3 dB Beamwidth	90 °				
H Plane 3 dB Beamwidth	360 °				
Mounting Tube	90 mm diameter / 260 mm length				
Base Materials	Stainless Steel and Fiberglass				
Antenna Weight	4.2 kg				

PACKAGING

1 pc Antenna with brackets per Cardboard Tube: 1445 mm(L) x125mm(W) x120mm(H), Approx Weight 5.255 kg

WARRANTY

3 years (Please refer to [Benelec Standard Warranty Terms and Conditions](#))

Website: benelec.au