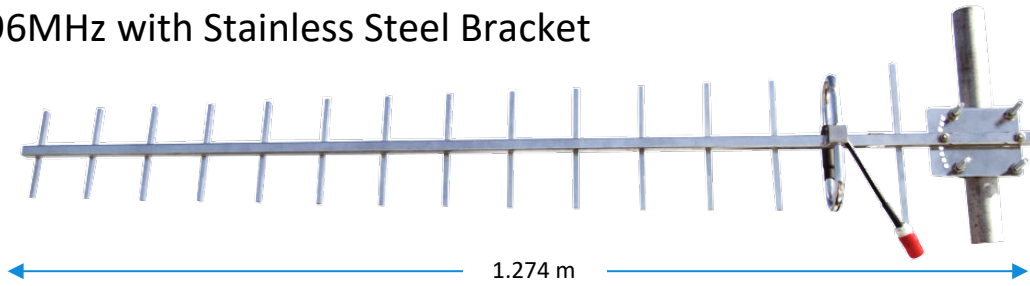


## DATASHEET

### Benelec UHF 12dBd 15 Element Yagi 800-896MHz with Stainless Steel Bracket



The 02484 antenna is a 12dBd (14dBi) Gain, Stainless Steel Yagi antenna for use in the 758 – 870 MHz Radio Band. Its high gain affords exceptional radio link coverage. The 02484 antenna offers a stable radiation Pattern across the whole band. Its robust construction ensures excellent longevity and Performance. All Stainless Steel construction is ideally suited for weather and corrosion resistance.

All mechanical connections are welded for minimum inter-modulation levels. All electrical connections are directly soldered.

#### APPLICATIONS

Link coverage for the 758 – 870 MHz Radio Band.

#### TUNING

Factory tuned; no further tuning required.

#### FEATURES

- All welded Stainless Steel Construction
- Electro polished for significantly improved corrosion resistance
- Integrated Mounting Bracket
- Vertical tilt adjustment  $\pm 20^\circ$
- Durable

#### MOUNTINGS

Angle adjustable mounting plate (included)  
Maximum pole size: 54 mm

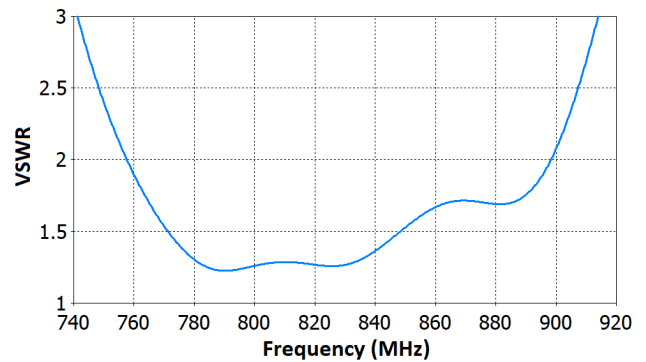
#### PACKAGING

Cardboard box, one antenna per box,  
1200 x 200 x 100 mm, G.W.: 2.1 kg

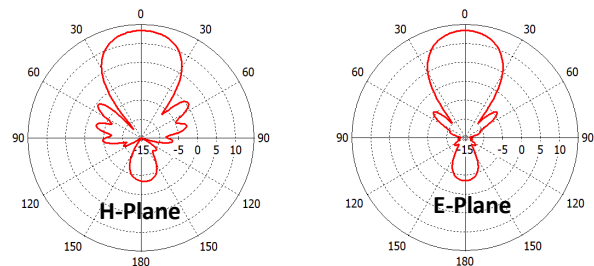
#### WARRANTY

3 years (Please refer to [Benelec Terms & Conditions](#))

#### VSWR



#### RADIATION PATTERNS



#### SPECIFICATIONS

|                        |  |            |
|------------------------|--|------------|
| Frequency              | 758 – 898 MHz                            | VSWR < 2.0 |
|                        | 770 – 848 MHz                            | VSWR < 1.5 |
| Gain                   | 12 dBd (14 dBi)                          |            |
| Impedance              | 50 $\Omega$                              |            |
| F/B Ratio              | 20 dB                                    |            |
| E-Plane Beamwidth      | 40 Deg                                   |            |
| H-Plane Beamwidth      | 44 Deg                                   |            |
| Construction           | All welded Stainless Steel Construction  |            |
| Projected Area         | 0.07618 SQM                              |            |
| Tuned Bandwidth        | 140 MHz                                  | VSWR < 2.0 |
|                        | 78 MHz                                   | VSWR < 1.5 |
| Length                 | 1.274 m                                  |            |
| Weight                 | 1.4 kg                                   |            |
| Termination*           | Cable tail with N type Female Receptacle |            |
| Wind Loading @ 160 KPH | 82.469 N                                 |            |

\* Longer cable tail and alternative connector types are available on request.

Website: [benelec.au](http://benelec.au)