

DATASHEET

CEL-FI ROAM R41

Mobile Cellular Coverage Solution

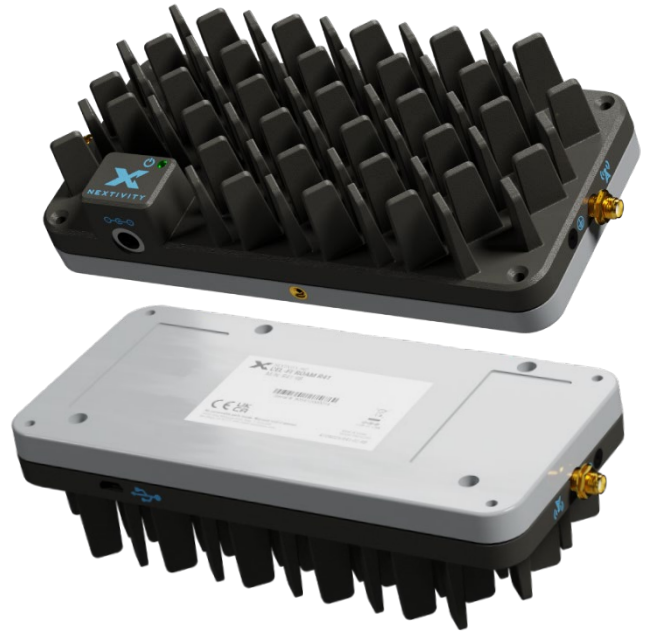


PART NO: 01104C06

The CEL-FI ROAM R41 mobile cellular coverage solution delivers reliable 3G, 4G, and 5G connectivity inside cars and boats, including fleet vehicles. With the latest Nextivity proprietary IntelliBoost chip, ROAM R41 offers enterprise-grade performance to solve poor coverage and enable dependable calling, texting, and streaming on the move. The system features plug-and-play operation for quick and easy set up, improving connectivity in any car, truck, RV, or boat within minutes. ROAM R41 also supports carrier switching through the Nextivity WAVE App for iOS and Android devices.

FEATURES

- Suitable for Telstra / Optus / Vodafone
- Deploy the unit anywhere in the network, with full frequency coverage
- Latest 4th generation Nextivity proprietary IntelliBoost chip delivers channelized coverage for specific mobile network operator signals
- Support for 3G, 4G, and 5G dynamic spectrum sharing (DSS)
- Easy to install with plug-and-play operation



SPECIFICATIONS

Frequency Bands	1/3/5/7/8/20/26/28L
Relay Channel Bandwidths (MHz)	5/10/15/20
Networks	3G/4G/5G
Network Protocols	WCDMA/LTE/DSS
Network Selection	Automatically (MyWave App set to "Following")
Configured to authorized operator	PLMN-IDs
Duplex Modes	FDD
# of Relay Bands (MHz max.)	1
Relay Bandwidth (MHz max.)	20
Output Downlink Power (All Bands) (dBm max.)	0
Output Uplink Power (Bands 5/8/20/26/28L) (dBm max.)	22
Output Uplink Power (Bands 1/3/7) (dBm max.)	24
System Gain (dBm max.)	100
Enterprise-Grade Echo Cancellation (dB min.)	30
Return Loss (dB typ.)	-8

BANDS

Frequency Bands	Downlink (MHz)	Uplink (MHz)	Max. Relay BW (MHz)
1	2110-2170	1920-1980	
3	1805-1880	1710-1785	20
5	869-894	824-849	
7	2620-2690	2500-2570	
8	925-960	880-915	15
20	791-821	832-862	
26	859-894	814-849	20
28L	758-788	703-733	

INTERFACE

Donor RF Connector	SMA (f)
Server RF Connector	SMA (f)
DC Input	5.5 x 2.5 mm (f) Barrel
Device Setup	Bluetooth for WAVE App
Power & System Status	Bi-color LED (Green/Red)
Factory Debug only	USB 2.0 Micro-B
System Management & SW Updates	WAVE App for iOS 11.0 or later WAVE App for Android
Band Selection	MyWAVE App for iOS 11.0 or later MyWave App for Android

COMPLIANCE

3GPP	TS 25.143 Rel 13 3GPP TS 36.143 Rel 13
CE	Compliant RED 2014/53/EU
RoHS3	EN 63000: 2018
ACMA/RCM	AS/NZS CISPR, 32:2013
Bluetooth	LE Ver 4.2

POWER SUPPLY

Power Consumption (W) max.	18
Input Voltage (VDC)	11.5 to 15
Input Current (A max.)	1.5
Power Supply Plug	Automobile Auxiliary Power
Power Supply Cable	18 AWG
Power Supply Cable Length	5m

ENVIRONMENTAL

Operating Temperature	0 to 60 °C
Storage Temperature	-35 to 70 °C
Heat Dissipation	Passive Convection
Surface Temperature max. at ambient	44 °C
Non-condensing Humidity	0 to 95%
Ingress Protection Rating	IPX0

PACKAGING

Part Number	Multi-Carton			Individual Carton	
	Dimensions mm	# of Units	Weight KG	Dimensions mm	Weight KG
01104C06	435*217*235	10	8.7	215*82*97	0.7

CEL-FI ROAM R41 MAIN UNIT OUTLINE

