

**MATERIAL & FINISH:**

1. BODY: BRASS, ALBALOY PLATED
2. CENTER CONTACT: PHOSPHOR BRONZE, SILVER PLATED
3. COUPLING NUT: BRASS, ALBALOY PLATED
4. INSULATOR: PTFE

**ELECTRICAL DATA:**

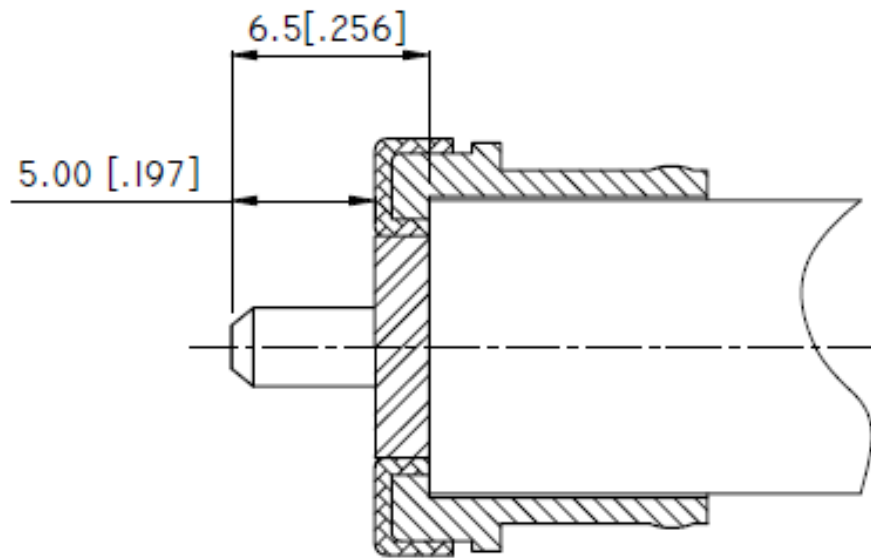
1. IMPEDANCE: 50 Ω
2. FREQUENCY RANGE: DC~6GHz
3. VSWR: 1.05 AT DC~3GHz  
1.17 AT 3~6GHz
4. DC TEST VOLTAGE: 2500V MIN.

**ENVIRONMENTAL DATA:**

1. TEMPERATURE RANGE: -55°C~+125°C
2. 2011/65/EU (RoHS): COMPLIANT

**MECHANICAL DATA:**

1. MECHANICAL DURABILITY: 500 CYCLES MIN.
2. CENTER CONTACT: CAPTIVATED
3. OUTER CONTACT: CLAMP
4. CONNECTOR RETENTION TENSILE FORCE: 330N [74 LBF]



CABLE STRIPPING DIMENSIONS

